

/// The optimum shredder **for maximum throughput rates**



For large quantities of wood waste!

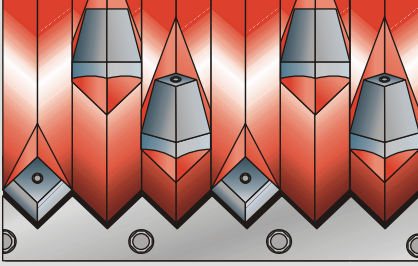


The WL 10 – WL 20 shredders **reliable technology for all wood materials**

The slow-turning single-shaft shredders WL 10 - WL 20 are used in the woodworking industry for shredding large quantities of wood waste (pallets,

chipboard, etc.). The basic models are built based on customer requirements (throughput rate, rotor design, hopper design, etc.).

WL 10 - WL 20 technology



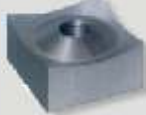
Patented V-rotor

- Optimum material intake
- Minimum cutting knife wear
- Low power consumption yet high output
- Narrow cutting gap between rotor and counterknife
- Defined knife projection

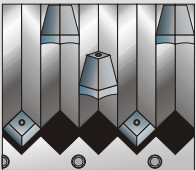
The profiled V-rotor is manufactured in one piece and mounted by sturdy rotor bearings. Special knife holders are welded into milled knife pockets around its circumference.

The cutting knives are inserted into these holders and screwed in place from behind. As a result, high-speed knife changing is possible because the design prevents the screw heads from being damaged during shredding.

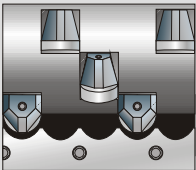
The concave cutting knives can be turned four times and guarantees a precise cut at a high throughput rate.



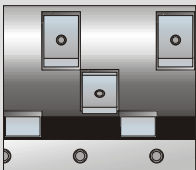
Other rotor versions



Profiled rotor with cutting knives inserted in the recesses



Flat rotor with round or pot knives



Flat rotor with rectangular or square turnable knives

The optimum shredder – for maximum throughput rates

WL10 – WL 20

For shredding maximum volumes

The shredders WL 10 - WL 20 are used in the woodworking industry for shredding large quantities of wood waste. The rotor widths range from 39.4" (1,000 mm) to 118" (3,000 mm) depending on design. The machine is driven by an electric motor

with an output of 30 hp (22 kW) to 120 hp (90 kW) or a twin-drive of 2 x 100 hp (75 kW). The level of required drive output depends on the material to be shredded, the number of shredding knives being used and the required throughput rate.



WL 10 - WL 20 shredders with single and twin-drive

V-rotor with two rows of knives



WL15 Shredder and conveyor belt with magnetic shut-off switch



WL 20 Shredder, loaded by front-loader

The optimum shredder – for maximum throughput rates

WL 10 – WL 20

The shredders WL 10 - WL 20 in action

The material is fed through the hopper to a hydraulic ram which presses the material against the rotating rotor. The inserted material is shredded between the rotating knives and counterknives which are fixed in place. The ram is

fitted with scraper rails which prevents any unwanted material from being pulled between the ram and the machine frame. The material can be transported out by a conveyor belt, discharge auger or dust collection system.



WL 15 shredder, loaded by forklift with gaylord



Pronged rail in the ram to avoid material spinning



Serrated Ram for thin material



Hydraulic ram pushes material against the rotor for high throughput

WL 10 - WL 20 technology



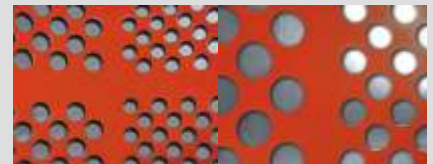
Power drive

The machines are driven by an electric motor with up to 50 hp (37 kW) drive output which is transmitted to the rotor by a hydro-clutch (as of 30 hp / 22 kW), v-belts and gears.



Enclosed hydraulic system

The ram's hydraulic system is located inside the machine body to protect it against wood dust and damage. The hydraulic cylinder is suspended by cardanic joints so that any unwanted lateral force on the piston cup is avoided.



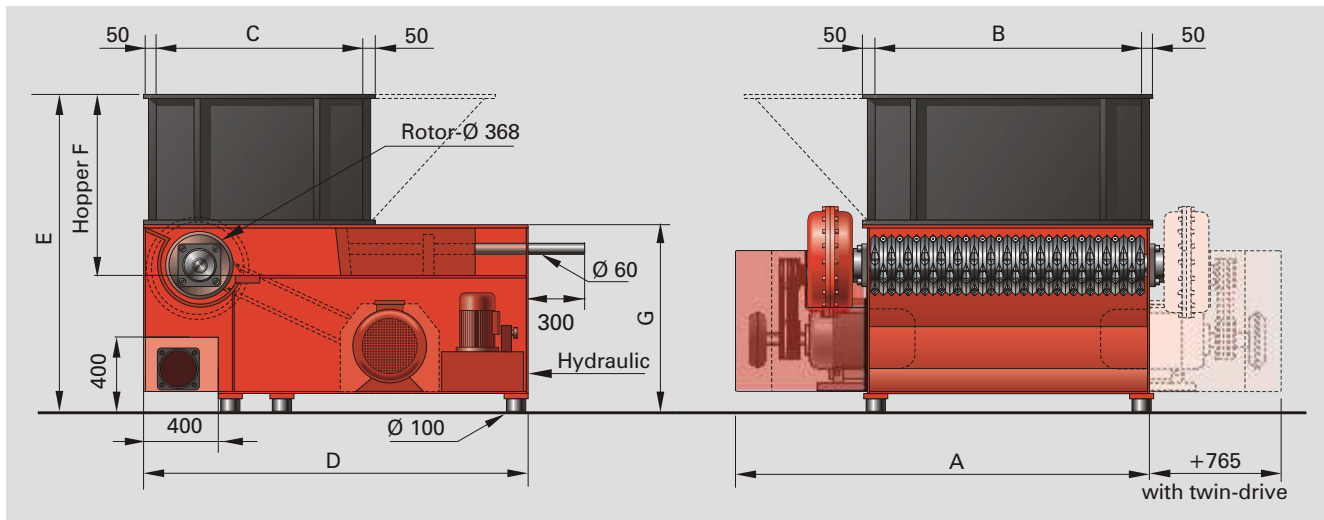
Fast delivery

The shredded material is delivered through the screen located underneath the rotor. The screen diameter 3/8" - 4" (10 - 100 mm) determines the size of the shredded material.



Technical Data

WL 10 – WL 20



| | WL 10 | WL 12 | WL 13 | WL 14 | WL 15 | WL 18 | WL 20 |
|---|---|-------------|-------------|--------------|--------------|--------------|--------------|
| Size A (Inch/mm) | 70.9/1.800 | 78.7/2.000 | 82.7/2.100 | 90.6/2.300 | 90.6/2.300 | 102.4/2.600 | 118.1/3.000 |
| Size B (Inch/mm) | 39.4/1.000 | 47.2/1.200 | 51.2/1.300 | 59.1/1.500 | 59.1/1.500 | 70.9/1.800 | 78.7/2.000 |
| Size C (Inch/mm) | 47.2/1.200 | 47.2/1.200 | 47.2/1.200 | 47.2/1.200 | 59.1/1.500 | 59.1/1.500 | 59.1/1.500 |
| Size D (Inch/mm) | 82.7/2.100 | 82.7/2.100 | 82.7/2.100 | 82.7/2.100 | 106.3/2.700 | 106.3/2.700 | 106.3/2.700 |
| Size E (Inch/mm) | 67.7/1.720 | 67.7/1.720 | 67.7/1.720 | 67.7/1.720 | 67.7/1.900 | 74.8/1.900 | 74.8/1.900 |
| Size F (Inch/mm) | 40.6/1.030 | 40.6/1.030 | 40.6/1.030 | 40.6/1.030 | 40.6/1.030 | 40.6/1.030 | 40.6/1.030 |
| Size G (Inch/mm) | 39/990 | 39/990 | 39/990 | 39/990 | 39/990 | 47.2/1.200 | 47.2/1.200 |
| Hopper opening (Inch): | 39.4 x 47.2 | 47.2 x 47.2 | 51.2 x 47.2 | 59.1 x 47.2 | 59.1 x 59.1 | 70.9 x 59.1 | 78.7 x 59.1 |
| (mm): | 1.000x1.200 | 1.200x1.200 | 1.300x1.200 | 1.500x1.200 | 1.500x1.500 | 1.800x1.500 | 2.000x1.500 |
| Hopper vol. (yd ³ /m ³): | 1.7/1,3 | 2.0/1,5 | 2.1/1,5 | 2.5/1,9 | 3.0/2,3 | 3.7/2,8 | 3.9/3,0 |
| Throughput (kg/h) | The throughput rate depends on material composition and screen size | | | | | | |
| Rotor diameter (In./mm): | 14.5/368 | 14.5/368 | 14.5/368 | 14.5/368 | 14.5/368 | 14.5/368 | 14.5/368 |
| Rotor speed (rpm): | 60 -120 | 60 -120 | 60 -120 | 60 -120 | 60 -120 | 60 -120 | 60 -120 |
| Power (hp): | 50/60 | 60/75 | 60/75 | 75/100/120 | 75/100/120 | 75/100/120 | 100/120 |
| (kW): | 37/45 | 45/55 | 45/55 | 55/75/90 | 55/75/90 | 55/75/90 | 75/90 |
| Tools (Pieces): | 52 | 64 | 68 | 82 | 82 | 100 | 112 |
| Screen size (In./mm): | 3/8 - 4 / 10 - 100 (For all models) | | | | | | |
| Connection-Ø (In./mm): | 8/200 | 8/200 | 8/200 | 10/250 | 10/250 | 10/250 | 10/250 |
| Weight approx. (lbs/kg): | 7,700/3.500 | 8,800/4.000 | 9.900/4.500 | 11,000/5.000 | 12,300/5.600 | 16,000/7.300 | 17,900/8.100 |

Demonstrations and tests with your materials are possible in our facility by appointment.



WEIMA America, Inc.

3678 Centre Circle
Fort Mill, SC 29715

Phone: 803 - 802 - 7170

Fax: 803 - 802 - 7098

Internet: www.weimaamerica.com

E-mail: info@weimaamerica.com

With locations in

Ilfeld, Germany

Ternberg, Austria

Northants, Great Britain

La Ferté s. Jouarre, France

Harjumaa, Estonia

and more than 50 sales offices worldwide!

Advanced technology for size reduction