

## Specialty Products for Woodworking: - MOULDERS -

### ProStand II™

ProStand II is a non contact two-axis set-up stand for measuring machinery cutterheads. It measures Radius and Axial parameters utilizing a high-resolution color video camera.

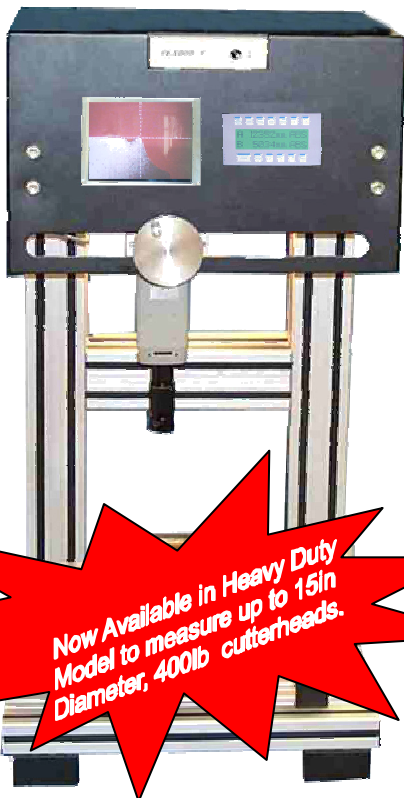
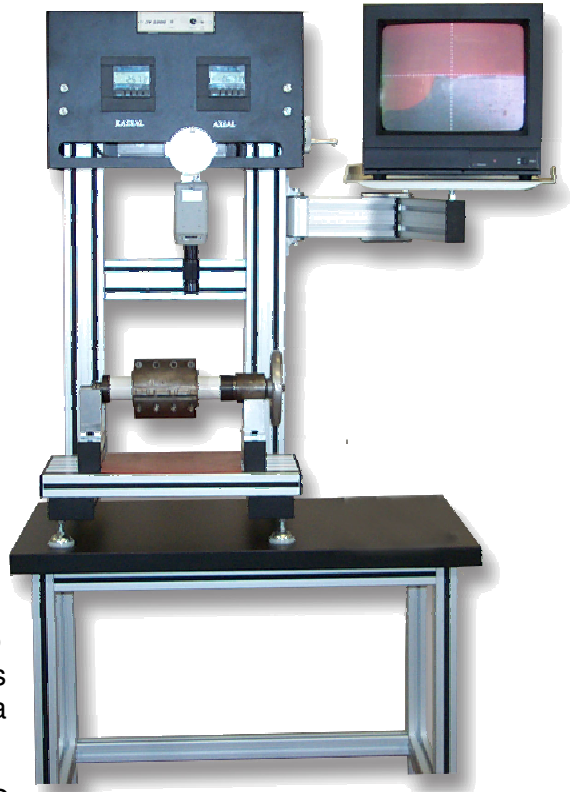
Three models of ProStand are available:

The **CRT Model** comes with a 15 inch color CRT monitor and individual digital displays for Radius and Axial measurements.

A monitor arm for holding the CRT and a Heavy Duty table is included (as shown).

The **LCD Model** comes with a 6 inch color LCD panel. It uses a Dual Input Digital Display to simultaneously display both Radial and Axial measurements. The Dual Input Display can also calculate the angle and radius of knife edge features and, with optional printer, print this information to a label. Heavy Duty table is optional.

The **HD Model** is a heavy duty version of the LCD Model. It is capable of measuring up to 15 inch (380mm) diameter cutterheads weighing up to 400lbs (180kg). A sliding front carriage facilitates loading large heavy cutterheads. A Heavy Duty table is optional.

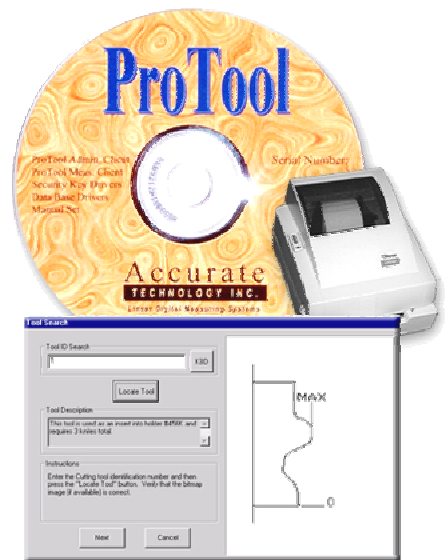


Now Available in Heavy Duty Model to measure up to 15in Diameter, 400lb cutterheads.

**ProTool™**, the system database software, is used for cataloging cutting tool information. It records axial and radial measurements, the last time the head was sharpened, who measured the head, what machine(s) it has been run on, where it is stored, what material the knives are, how many feet before re-grinding, where and when the tooling was purchased and other pertinent details for each tool.

Information is then easily recalled for production analysis, wear analysis, and tracking by vendor or shop location.

ProTool will print labels containing any of the cataloged information from the ProTool database.

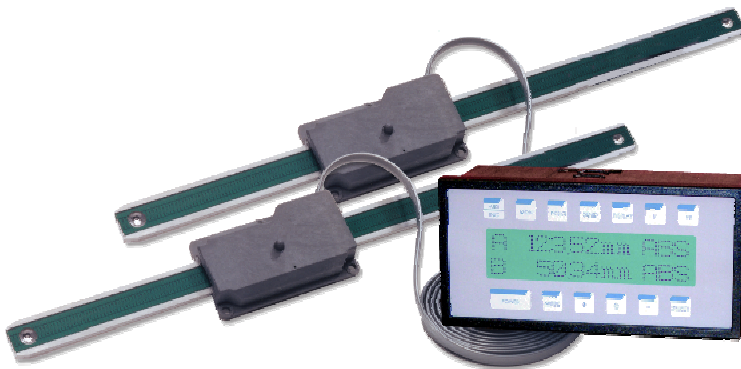


## ProSet™

ProSet is a specially designed ProScale system for use on the top and outside heads of moulders to help reduce setup time when changing tooling.

After a new cutterhead is installed, the operator sets the ProSet to "radius" mode and adjusts the spindle position until the measured radius of the cutterhead is displayed. Push a

button on the digital display, and the operator makes a final position adjustment while monitoring the ProSet, to set the outfeed dimension.



## ProScale 150 Axis Kit

Everything you need to add digital measuring to two axes on your moulder.

Each Axis Kit includes two ProScale Model 150-10 inch (250mm) scales, two readheads with 10 foot (3m) cables and a Dual Input Digital Display (panel mount 24VDC only). This kit is ideal for installation on any

UP-DOWN *and* IN-OUT spindle. The Digital readout is panel mounted and displays both positions simultaneously.

## Product Specifications

### ProStand II

	<u>CRT/LCD</u>	<u>HD</u>
Radius Measure:	125mm	190mm
Axial Measure:	300mm	380mm
ProStand Height:	60in.	65in
ProStand Weight:	120 lbs	160lbs
ProStand Power:	110-240 VAC	

### ProTool

#### Min. Requirements

P100 / Windows  
95/98/2000/XP®  
32 Mb RAM / 5Mb Hard Disk  
CD & Floppy Disk Drives

### ProSet & Axis Kit

Measurement Range: 250mm  
System power:

ProSet: 2AA Bat.  
Axis Kit: 24VDC

- Accuracy: ProStand: ±.003in or .08mm ProSet/Axis Kit: ±.002in or .05mm
- Repeatability: ±.001in or .01mm
- Display: Inches, Millimeters, or Fractions
- Warranty: ProStand, ProTool: 1 year; ProSet, Axis Kits: 3 years.

Available from:

Made In USA 

Information as of 1.1.2005

